

MONTAGGIO VERSIONE 1 RR1,2,3,4=10  
 RR13,15,17,19=10  
 RR21,22,23,24=220  
 RR29,30,31,32=100

MONTAGGIO VERSIONE 2 RR1,2,3,4=10  
 RR13,15,17,19=10  
 RR21,22,23,24=220  
 RR29,30,31,32=100

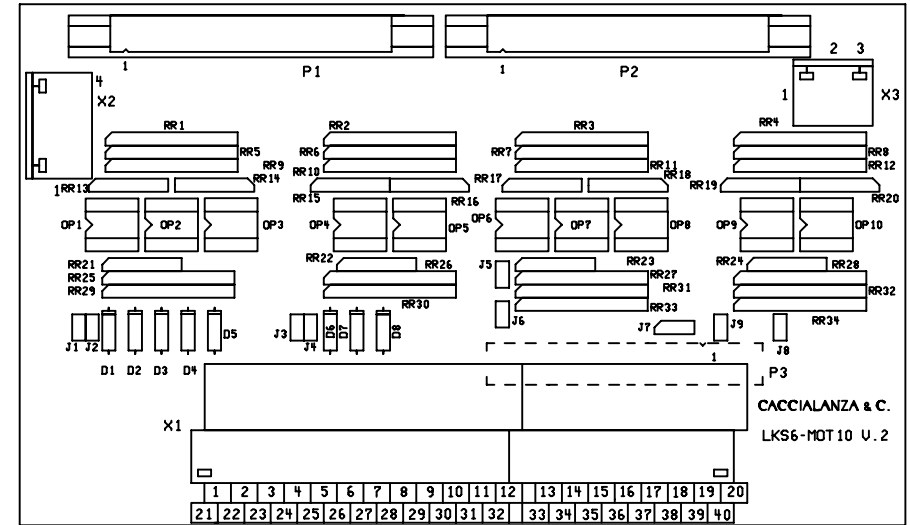
MONTAGGIO VERSIONE 3 RR1,2,3,4=10  
 RR13,15,17,18,19,20=10  
 RR21,22,23,24=220  
 RR29,30=100  
 RR28,32=22

MONTAGGIO VERSIONE 4 RR1,2=10  
 RR13,15=10  
 RR7,8,27,34=22  
 RR18,20,21,22,23,24=220  
 RR29,30=100

RETI RESISTIVE 5+1 = RR13,14,15,16,17,18,19,20,21,22,23,24

RETI RESISTIVE 5x2 = RR1,2,3,4,5,6,7,8,9,10,11,12,25,26,27,28,29,30,31,32,33,34

DIODI D1,2,3,4,5,6,7,8 = 1N4148



**IMPORTANTE :**

CACCIALANZA & C. S.p.A. si riserva il diritto di modificare senza preavviso le informazioni contenute su questa scheda con il proposito di apportare miglioramenti alla produzione

**IMPORTANT :**

CACCIALANZA & C. S.p.A. reserves the right to change or modify without previous notice any data or specification due to changes or modification in order to improve the products presented

Rev.	Date	Description	Drawn	Checked	Approved
1	15.01.97	CAD	CA	CA	
0	24.11.94	EMESSO PER COSTRUZIONE	CA	CA	

<b>CACCIALANZA &amp; C.</b> s.p.a. ANTINCENDIO SICUREZZA ANTINQUINAMENTO SEGRATE (MILANO) - ITALY		Client / Project			
		Title SCHEDA MOT10 V2 PER LKS6 VISTA COMPONENTI			
Drawn	Date	Name			
Checked	24.11.94	CA			
Approved					
Code	4640011009	Sys.	Size	Scale	Dwg nr.
			A3	1:1	46191006
				Rev.	Sheet
				1	1 of 1